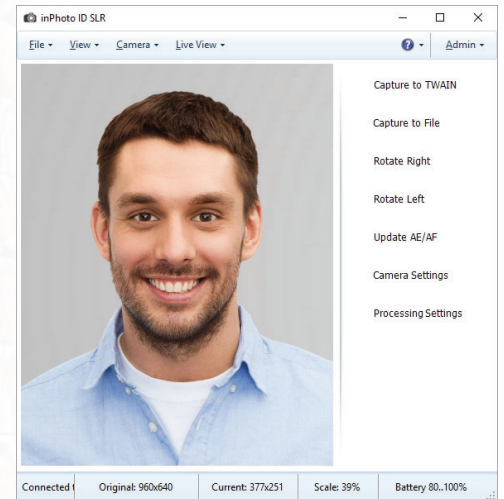


inPhoto ID SLR Software

inPhoto ID SLR - Fastest Way To Quality ID Photo



inPhoto ID SLR

inPhoto ID SLR is a comprehensive application for Canon EOS cameras able to drive your business to the next level. inPhoto ID SLR is a great solution that helps to speed up ID card photo processing without losing a single percent quality. All that is available in easy to use and simple interface. This app brings a lot of convenience to the everyday routine and helps to make ID photo making much easier and more productive.

Main fetures:

- Canon EOS models supported
- Live preview from camera
- Basic camera settings control
- Auto exposure modes supported
- Auto focus mode supported
- TWAIN supported
- Automated ID photo processing

Benefits:

- **Professional Software for ID Photo processing**
inPhoto ID SLR offers great functionality in shooting and processing identification document photos.
- **Smart & Intuitive interface**
inPhoto ID SLR features a user-friendly layout that makes photo processing clear and simple.
- **Real-time control**
The application allows adjusting the best camera angle and choosing the necessary settings in a real-time mode.
- **Effective technical support**
Feel free to contact our team anytime in case you have any questions on the software we provide.

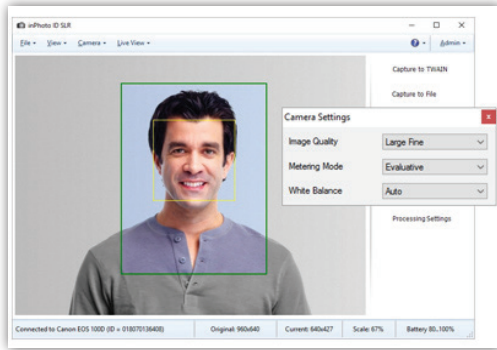


Contacts:

www.IDPhotoCapture.com
info@idphotocapture.com

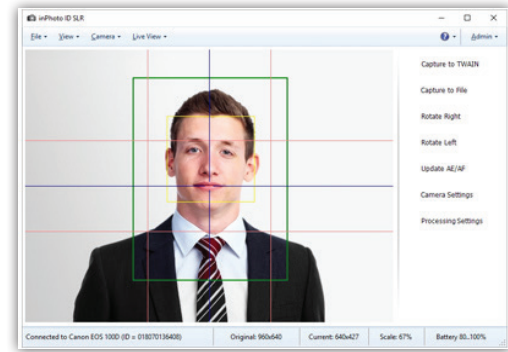
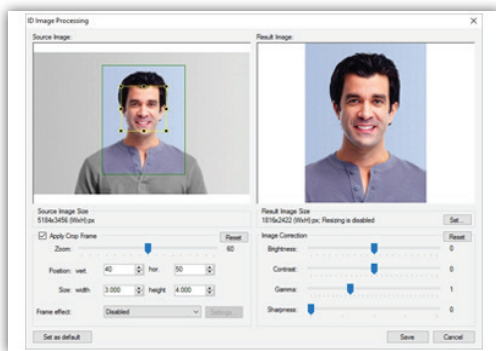
Remote shooting and camera settings control

inPhoto ID SLR helps to control main camera functions remotely. The controlled options include image quality settings, shutter and release control and immediate photo capture to the computer. All the controls are available on a single screen. You can use almost any model from Canon EOS-series cameras. Taking ID photos has never been so fast and easy!



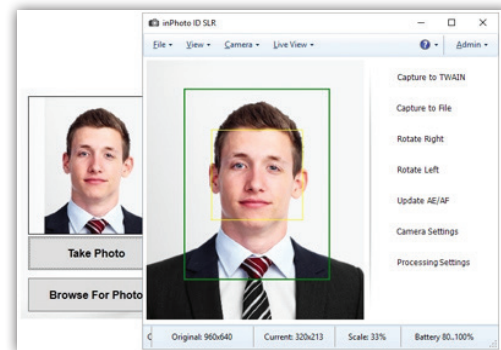
ID Photo Enhancement

inPhoto ID SLR is a powerful image enhancing and cropping tool that allows fulfilling a number of standard tasks like adjusting image brightness, gamma, contrast and sharpness. A great deal is that this app works with photo batches, so you can get impressive quality ID photo in a minute.



Live preview and face detection

To save the time and efforts of the photographer this app offers real-time preview and shooting settings verification on your PC screen. Control the picture quality and get flawless id photos. Face detection function on live preview enables positioning and cropping when taking photos right on live image. inPhoto ID SLR help to ensure top quality and save a lot of time.



TWAIN image transfer

inPhoto ID SLR works as TWAIN data source, and so you can safely use transfer option and send ID photos to Adobe Photoshop, CardFive, EPISuite and any other TWAIN-compliant application. This feature saves a lot of time and significantly improves the performance. Create ID cards, documents or passes quickly and easily!

System requirements :

- Windows 10/8/7
- both 64bit and 32bit supported
- 50Mb free disk space
- Windows compatible SLR camera



Recommended: Canon EOS Rebel T6 / EOS 1300D

- Entry-level SLR camera
- 18.0 Megapixel APS-C Sensor
- DIGIC 4+ Image Processor



Recommended: Canon EOS Rebel SL1 / EOS 100D

- Smallest SLR camera
- 18.0 Megapixel APS-C Sensor
- DIGIC 5 Image Processor

Satisfaction Guarantee

If you are not satisfied with this solution, you are free to choose an alternative from our selection of products for various camera types.



inPhoto ID Webcam

Entry-level solution to control and capture images with any webcam. Cheap and easy, but suitable for general ID tasks.



inPhoto ID PS

Most valuable solution for compact digital cameras. Built-in flash, optical zoom, live view and good quality.